

How to: Create a new user profile named “My Profile” and set it current

1. In the AutoCAD application window, click the Application Menu button and then click Options (see Figure 1).

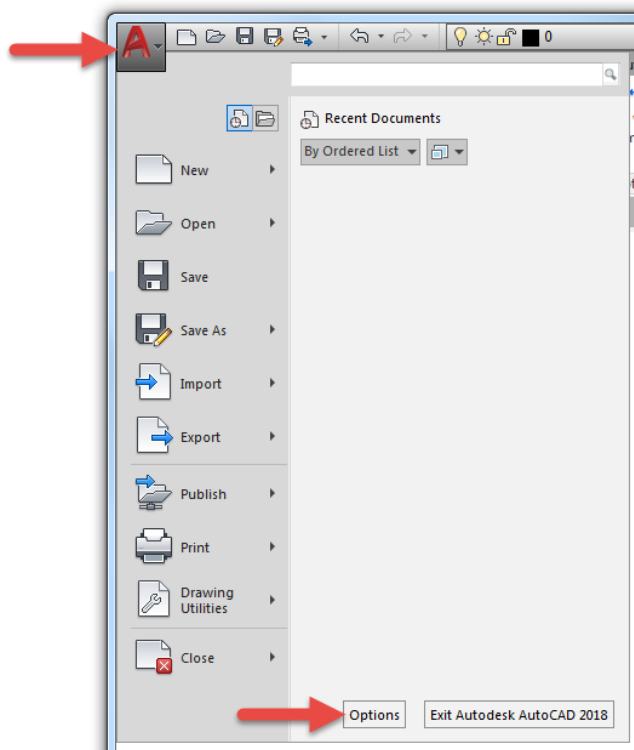


Figure 1. Application menu expanded

2. In the Options dialog box, Profiles tab, click Add to List (see Figure 2).

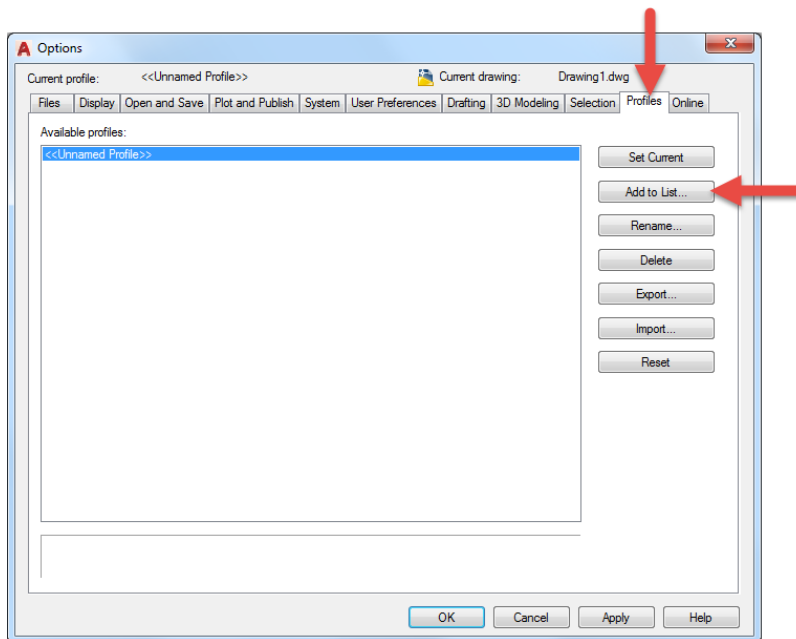


Figure 2. The Profiles tab of the Options dialog box is used to manage user profiles

3. In the Add Profile dialog box, click in the Profile Name text box and type **My Profile** (see Figure 3).

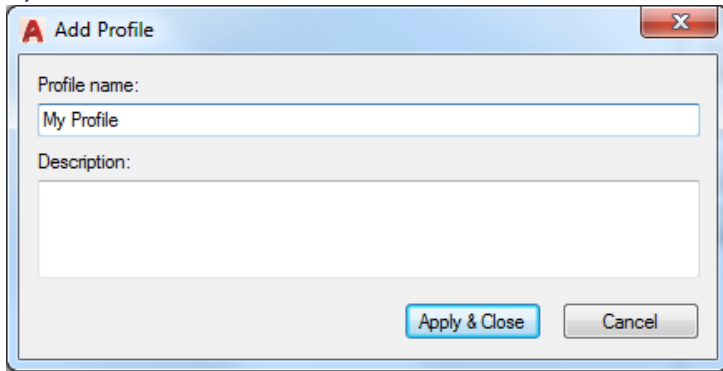


Figure 3. Creating a new user profile

4. Optionally, in the Description text box, enter a description.
The value entered in the Description text box don't appear anywhere in the AutoCAD user interface, so it is simply just for your information only. It can be helpful as a way to track when the user profile was last updated, maybe why it was last updated, or even something like a URL to that points to a change log.
5. Click Apply & Close to create the new user profile.
6. In the Options dialog box, Available Profiles list, select the new user profile named My Profile and click Set Current to set it as the current user profile.
A user profile must be set current before you can make changes to it or apply the settings in the user profile to the AutoCAD environment